

Value-Lift Range





"The table is perfect and I am really happy with the quality, material and colour. Athlegen made the whole process incredibly simple and efficient and delivered on time."

CAROLYN AUSTIN

Value-Lift Massage

Designed to fulfil the basic requirements of remedial and relaxation massage. The power-driven height adjustment provides greater access for elderly and incapacitated patients while also achieving an ergonomic working platform for the practitioner.

PRODUCT INFORMATION



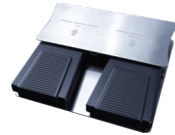
ADJUSTABLE HEAD CRADLE & ARMREST

The integrated gas-assisted head cradle and armrest can be adjusted to your preferred angle for superb patient comfort.



DANISH DESIGNED LINAK ACTUATOR

All Value-Lift tables feature a Danish actuator by Linak which is manufactured to our strict quality control. All products are inspected and checked by Athlegen when they arrive in Australia.



STAINLESS STEEL FOOTSWITCH

The table comes with a sturdy footswitch made with a stainless steel body. Order an additional footswitch to control the height from either side of the table.



TOP SHAPE

The contoured top increases access to the centre of the table. The curved shoulder section allows patients to comfortably access the armrest.



ADJUSTABLE FLOOR-LEVELLING FEET

The table sits securely on four solid supports that can be adjusted for an uneven floor.

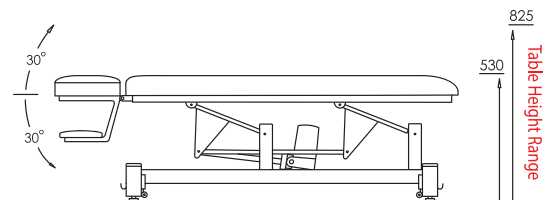
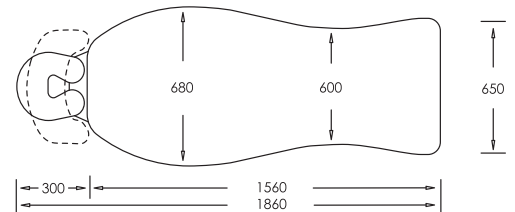


RETRACTABLE WHEELS

The foot operated retractable wheel system allows for easy manoeuvrability when moving the table. When not in use the wheels retract to provide a stable solid base.

KEY SPECIFICATIONS

CUSHIONING	60mm, medium finish
UPHOLSTERY	Semi-PU fabric
ADJUSTMENTS	Head cradle: +30° to -30°
SAFE WORKING LOAD	165kg
MOTOR	Origin: PRC Design: Linak Denmark Lift force: 6,000N Speed: 12mm/sec Height adjustment (min to max): 295mm in 26 seconds Speed test load: 165kg
FOOTSWITCH	Single or optional dual footswitches (one on each side of the table) Origin: PRC Stainless steel Power control
SHIPPING	1910 x 770 x 720mm 74kg
WARRANTY	Structural: 5 years Hardware: 3 years Motor: 2 years Control box: 2 years Footswitch: 2 years Gas strut: 2 years Upholstery: To arrive in perfect condition





"The table is perfect and I am really happy with the quality, material and colour. Athlegen made the whole process incredibly simple and efficient and delivered on time."

CAROLYN AUSTIN

Value-Lift ABR

Ideal for patient assessment and examinations as well as general practice use, light physiotherapy use and first aid injury. The power-driven height adjustment provides greater access for elderly and incapacitated patients while also achieving an ergonomic working platform for the practitioner.

PRODUCT INFORMATION



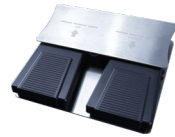
GAS-ASSISTED ADJUSTABLE BACKREST

Lift-assist gas springs help support a patient's body weight for more comfortable and secure table adjustments. Patients can enjoy smoother table transitions with minimal disruption to treatment flow.



FREE INCLUDED SUPINE CUSHION

Use the supine pad to cover the face hole and increase patient comfort in the supine position.



STAINLESS STEEL FOOTSWITCH

The table comes with a sturdy footswitch made with a stainless steel body. Order an additional footswitch to control the height from either side of the table.



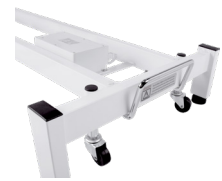
DANISH DESIGNED LINAK ACTUATOR

All Value-Lift tables feature a Danish actuator by Linak which is manufactured to our strict quality control. All products are inspected and checked by Athlegen when they arrive in Australia.



ADJUSTABLE FLOOR-LEVELLING FEET

The table sits securely on four solid supports that can be adjusted for an uneven floor.

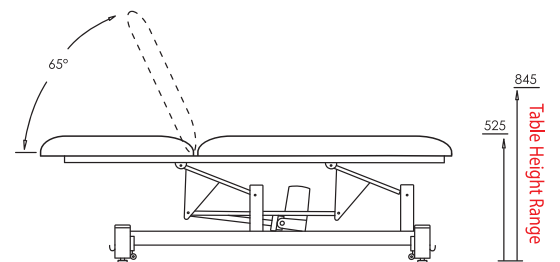
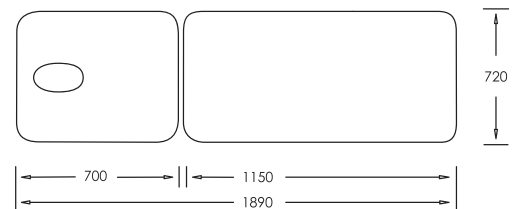


RETRACTABLE WHEELS

The foot operated retractable wheel system allows for easy manoeuvrability when moving the table. When not in use the wheels retract to provide a stable solid base.

KEY SPECIFICATIONS

CUSHIONING	60mm, medium finish
UPHOLSTERY	Semi-PU fabric
ADJUSTMENTS	Backrest: +65°
SAFE WORKING LOAD	165kg
MOTOR	Origin: PRC Design: Linak Denmark Lift force: 6,000N Speed: 12mm/sec Height adjustment (min to max): 320mm in 26 seconds Speed test load: 165kg
FOOTSWITCH	Single or optional dual footswitches (one on each side of the table) Origin: PRC Stainless steel Power control
SHIPPING	1970 x 800 x 720mm 74kg
WARRANTY	Structural: 5 years Hardware: 3 years Motor: 2 years Control box: 2 years Footswitch: 2 years Gas strut: 2 years Upholstery: To arrive in perfect condition





"The table is perfect and I am really happy with the quality, material and colour. Athlegen made the whole process incredibly simple and efficient and delivered on time."

CAROLYN AUSTIN

Value-Lift Treatment

A versatile table suitable for a wide range of modalities, including light physiotherapy use, massage, acupuncture, osteopathy, beauty treatments and examinations. The three-section configuration features a 700mm backrest and a long seat section. Ideal for treatments that require extra leg room.



NAVY SEMI-PU FABRIC



HAZARDOUS MATERIAL FREE (ROHS CERTIFIED)

PRODUCT INFORMATION



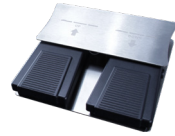
GAS-ASSISTED ADJUSTABLE BACKREST

Lift-assist gas springs help support a patient's body weight for more comfortable and secure table adjustments. Patients can enjoy smoother table transitions with minimal disruption to treatment flow.



GAS-ASSISTED ADJUSTABLE HEADREST

The standard configuration includes a face hole in the head section for comfortable prone treatments. The head section can be finely adjusted to enable patients to relax neck muscles fully during treatments.



STAINLESS STEEL FOOTSWITCH

The table comes with a sturdy footswitch made with a stainless steel body. Order an additional footswitch to control the height from either side of the table.



DANISH DESIGNED LINAK ACTUATOR

All Value-Lift tables feature a Danish actuator by Linak which is manufactured to our strict quality control. All products are inspected and checked by Athlegen when they arrive in Australia.



ADJUSTABLE FLOOR-LEVELLING FEET

The table sits securely on four solid supports that can be adjusted for an uneven floor.

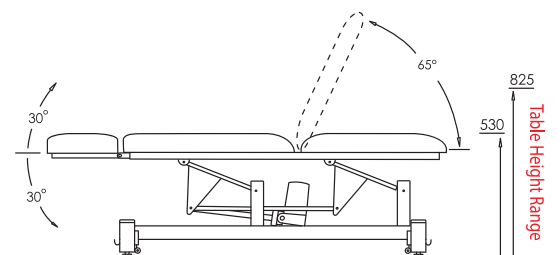
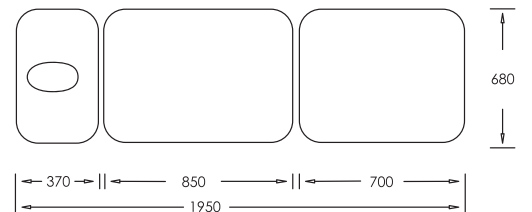


RETRACTABLE WHEELS

The foot operated retractable wheel system allows for easy manoeuvrability when moving the table. When not in use the wheels retract to provide a stable solid base.

KEY SPECIFICATIONS

CUSHIONING	60mm, medium finish
UPHOLSTERY	Semi-PU fabric
ADJUSTMENTS	Backrest: +65° Head section: +30° to -30°
SAFE WORKING LOAD	165kg
MOTOR	Origin: PRC Design: Linak Denmark Lift force: 6,000N Speed: 12mm/sec Height adjustment (min to max): 295mm in 26 seconds Speed test load: 165kg
FOOTSWITCH	Single or optional dual footswitches (one on each side of the table) Origin: PRC Stainless steel Power control
SHIPPING	1920 x 750 x 720mm 74kg
WARRANTY	Structural: 5 years Hardware: 3 years Motor: 2 years Control box: 2 years Footswitch: 2 years Gas strut: 2 years Upholstery: To arrive in perfect condition



Value-Lift Range

KEY FEATURES

TABLE	MASSAGE	ABR	TREATMENT
HEIGHT RANGE	530 to 825mm	525 to 845mm	530 to 825mm
TABLE LENGTH	1860mm	1890mm	1950mm
LIFT-ASSIST BACKREST	×	●	●
LIFT-ASSIST ADJUSTABLE HEAD CRADLE & ARMREST	●	×	×
LIFT-ASSIST ADJUSTABLE HEAD SECTION	×	×	●
FACE HOLE	×	●	●
SUPINE CUSHION	×	●	●

TABLE ORIGIN

MADE IN THE PRC	●	●	●
-----------------	---	---	---

LIFT MOTOR

LIFT FORCE	6,000N	6,000N	6,000N
SPEED	12mm/sec	12mm/sec	12mm/sec
HEIGHT ADJUSTMENT (MIN TO MAX)	295mm in 26 seconds	320mm in 26 seconds	295mm in 26 seconds
SAFE WORKING LOAD	165kg	165kg	165kg

FOOTSWITCH	●	●	●
ADDITIONAL FOOTSWITCH	○	○	○

TABLE WIDTH

TABLE WIDTH	680mm	720mm	680mm
-------------	-------	-------	-------

TOP SHAPE

CONTOURED TOP	●	×	×
STRAIGHT-SIDED TOP	×	●	●

CUSHIONING & UPHOLSTERY

IMPORTED CUSHIONING	Soft to medium finish	Soft to medium finish	Soft to medium finish
SEMI-PU FABRIC	Navy	Navy	Navy

BASE STYLE

LEVELLING FEET & RETRACTABLE WHEELS	●	●	●
-------------------------------------	---	---	---

WARRANTY

TABLE	MASSAGE	ABR	TREATMENT
STRUCTURAL	5 years	5 years	5 years
HARDWARE	3 years	3 years	3 years
MOTOR	2 years	2 years	2 years
CONTROL BOX	2 years	2 years	2 years
FOOTSWITCH	2 years	2 years	2 years
GAS STRUT	2 years	2 years	2 years
UPHOLSTERY	To arrive in perfect condition	To arrive in perfect condition	To arrive in perfect condition

OPTIONAL EXTRAS

DISPOSABLE FACE CRADLE COVERS
DISPOSABLE TABLE COVER
FITTED TERRY TOWELLING COVER
LEG BOLSTER
ADDITIONAL FOOTSWITCH

KEY

● STANDARD
○ OPTIONAL
× NOT APPLICABLE

www.athlegen.com.au
1800 813 000

Centurion is a brand of Alevo Pty Ltd © 2019
Designed in Australia by Athlegen
Made in the PRC

All dimensions (shown in mm) and specifications are approximate and are subject to manufacturing tolerances.

#200615