



"The table is perfect and I am really happy with the quality, material and colour. Athlegen made the whole process incredibly simple and efficient and delivered on time."

CAROLYN AUSTIN

## Value-Lift: Treatment

A versatile table suitable for a wide range of modalities, including light physiotherapy use, massage, acupuncture, osteopathy, beauty treatments and examinations. The three-section configuration features a 700mm backrest and a long seat section. Ideal for treatments that require extra leg room.



NAVY SEMI-PU FABRIC



HAZARDOUS MATERIAL FREE (ROHS CERTIFIED)

PRODUCT INFORMATION



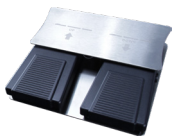
GAS-ASSISTED ADJUSTABLE BACKREST

Lift-assist gas springs help support a patient’s body weight for more comfortable and secure table adjustments. Patients can enjoy smoother table transitions with minimal disruption to treatment flow.



GAS-ASSISTED ADJUSTABLE HEADREST

The standard configuration includes a face hole in the head section for comfortable prone treatments. The head section can be finely adjusted to enable patients to relax neck muscles fully during treatments.



STAINLESS STEEL FOOTSWITCH

The table comes with a sturdy footswitch made with a stainless steel body. Order an additional footswitch to control the height from either side of the table.



DANISH DESIGNED LINAK ACTUATOR

All Value-Lift tables feature a Danish actuator by Linak which is manufactured to our strict quality control. All products are inspected and checked by Athlegen when they arrive in Australia.



ADJUSTABLE FLOOR-LEVELLING FEET

The table sits securely on four solid supports that can be adjusted for an uneven floor.

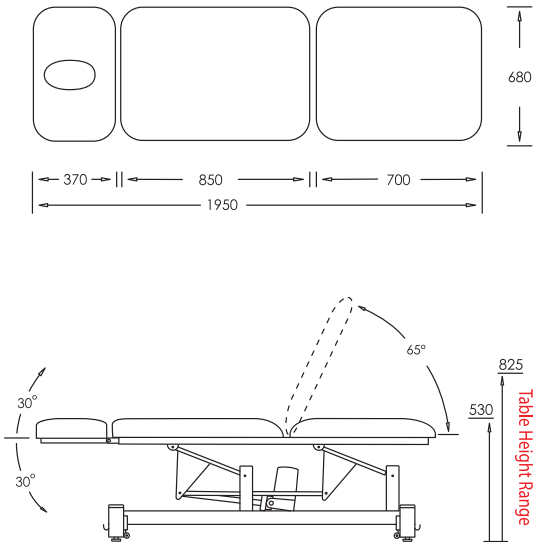


RETRACTABLE WHEELS

The foot operated retractable wheel system allows for easy manoeuvrability when moving the table. When not in use the wheels retract to provide a stable solid base.

KEY SPECIFICATIONS

CUSHIONING	60mm, medium finish
UPHOLSTERY	Semi-PU fabric
ADJUSTMENTS	Backrest: +65° Head section: +30° to -30°
SAFE WORKING LOAD	165kg
MOTOR	Origin: PRC Design: Linak Denmark Lift force: 6,000N Speed: 12mm/sec Height adjustment (min to max): 295mm in 26 seconds Speed test load: 165kg
FOOTSWITCH	Single or optional dual footswitches (one on each side of the table) Origin: PRC Stainless steel Power control
SHIPPING	1920 x 750 x 720mm 74kg
WARRANTY	Structural: 5 years Hardware: 3 years Motor: 2 years Control box: 2 years Footswitch: 2 years Gas strut: 2 years Upholstery: To arrive in perfect condition



All dimensions (shown in mm) and specifications are approximate and are subject to manufacturing tolerances.

# Value-Lift Range

## KEY FEATURES

TABLE	MASSAGE	ABR	TREATMENT
HEIGHT RANGE	530 to 825mm	525 to 845mm	530 to 825mm
TABLE LENGTH	1860mm	1890mm	1950mm
LIFT-ASSIST BACKREST	×	●	●
LIFT-ASSIST ADJUSTABLE HEAD CRADLE & ARMREST	●	×	×
LIFT-ASSIST ADJUSTABLE HEAD SECTION	×	×	●
FACE HOLE	×	●	●
SUPINE CUSHION	×	●	●

## TABLE ORIGIN

MADE IN THE PRC	●	●	●
-----------------	---	---	---

## LIFT MOTOR

LIFT FORCE	6,000N	6,000N	6,000N
SPEED	12mm/sec	12mm/sec	12mm/sec
HEIGHT ADJUSTMENT (MIN TO MAX)	295mm in 26 seconds	320mm in 26 seconds	295mm in 26 seconds
SAFE WORKING LOAD	165kg	165kg	165kg
FOOTSWITCH	●	●	●
ADDITIONAL FOOTSWITCH	○	○	○

## TABLE WIDTH

TABLE WIDTH	680mm	720mm	680mm
-------------	-------	-------	-------

## TOP SHAPE

CONTOURED TOP	●	×	×
STRAIGHT-SIDED TOP	×	●	●

## CUSHIONING & UPHOLSTERY

IMPORTED CUSHIONING	Soft to medium finish	Soft to medium finish	Soft to medium finish
SEMI-PU FABRIC	Navy	Navy	Navy

## BASE STYLE

LEVELLING FEET & RETRACTABLE WHEELS	●	●	●
-------------------------------------	---	---	---

## WARRANTY

TABLE	MASSAGE	ABR	TREATMENT
STRUCTURAL	5 years	5 years	5 years
HARDWARE	3 years	3 years	3 years
MOTOR	2 years	2 years	2 years
CONTROL BOX	2 years	2 years	2 years
FOOTSWITCH	2 years	2 years	2 years
GAS STRUT	2 years	2 years	2 years
UPHOLSTERY	To arrive in perfect condition	To arrive in perfect condition	To arrive in perfect condition

## OPTIONAL EXTRAS

DISPOSABLE FACE CRADLE COVERS  
DISPOSABLE TABLE COVER  
FITTED TERRY TOWELLING COVER  
LEG BOLSTER  
ADDITIONAL FOOTSWITCH

## KEY

● STANDARD  
○ OPTIONAL  
× NOT APPLICABLE

# Medical & Allied Health Range

## KEY FEATURES

RANGE	VALUE-LIFT		PRO-LIFT											
TABLE	ABR	T'MENT	ECHO MB1	ECHO MB2	ECHO SB	POD	T'MENT ONE	T'MENT AHS	T'MENT ABR	T'MENT 680	T'MENT 930	T'MENT MB	T'MENT V	T'MENT X
HEIGHT RANGE	525 to 845mm	530 to 825mm	511 to 998mm	511 to 998mm	511 to 998mm	513 to 1000mm	475 to 962mm	475 to 962mm	475 to 962mm	475 to 962mm	513 to 1000mm	508 to 995mm	475 to 962mm	508 to 995mm
TABLE LENGTH	1890mm	1950mm	1960mm	2000mm	2000mm	1860mm	1840mm	1860mm	1860mm	1860mm	1860mm	1880mm	1860mm	1880mm
MANUAL BACKREST	x	x	x	x	●	●	x	x	●	●	●	x	●	●
LIFT-ASSIST BACKREST	●	●	x	x	x	x	x	x	x	x	x	x	x	x
MOTORISED BACKREST	x	x	●	●	○	x	x	x	x	x	x	●	x	x
DUAL BACKREST (+65°)	x	x	x	x	x	x	x	x	x	x	x	x	●	x
DUAL BACKREST (+65° TO -20°)	x	x	x	x	x	x	x	x	x	x	x	x	x	●
MOTORISED SEAT TILT	x	x	x	x	x	●	x	x	x	x	x	x	x	x
ADJUSTABLE LEG SECTION (+40° TO -90°)	x	x	x	x	x	●	x	x	x	x	x	x	x	x
LIFT-ASSIST ADJUSTABLE HEAD SECTION	x	●	x	x	x	x	x	x	x	x	x	x	x	x
ADJUSTABLE HEAD SECTION	x	x	x	x	x	x	x	●	x	●	●	x	x	x
FACE HOLE	●	●	○	x	x	○	○	●	○	●	●	○	○	○
SUPINE CUSHION	●	●	x	x	x	x	x	x	x	x	x	x	x	x
NECK BOLSTER	x	x	○	○	○	○	x	x	x	x	x	○	x	x
MOULDED ARMRESTS	x	x	x	x	x	●	x	x	x	x	x	x	x	x
ECHO FILL-IN PAD	x	x	●	●	●	x	x	x	x	x	x	x	x	x
SIDE SUPPORT	x	x	x	x	x	x	x	x	x	x	x	○	○	○
SAFETY RAILS	x	x	○	○	○	x	x	x	x	x	x	○	x	x

## TABLE WIDTH

STANDARD	720mm	680mm	710mm	660mm	660mm	610 or 660mm	610 or 660mm	610 or 660mm	610 or 660mm	610 or 660mm	610 or 660mm	610 or 660mm	610 or 660mm	610 or 660mm
OPTIONAL	x	x	N/A	710mm	710mm	700mm	710mm	710mm	710mm	710mm	710mm	710mm	710mm	710mm

## CUSHIONING

DUNLOP STANDARD	x	x	●	●	●	●	●	●	●	●	●	●	●	●
DUNLOP ENDURO	x	x	○	○	○	○	○	○	○	○	○	○	○	○
DUNLOP LUXURA	x	x	○	○	○	○	○	○	○	○	○	○	○	○
DUNLOP FIRM	x	x	x	x	x	x	○	○	○	○	○	○	○	○
DUNLOP ULTRA FIRM	x	x	x	x	x	x	○	○	○	○	○	○	○	○
IMPORTED CUSHIONING	●	●	x	x	x	x	x	x	x	x	x	x	x	x

## KEY

- ○

x
- STANDARD

OPTIONAL

NOT APPLICABLE

# Medical & Allied Health Range

## BASE STYLE

RANGE	VALUE-LIFT		PRO-LIFT											
	ABR	T'MENT	ECHO MB1	ECHO MB2	ECHO SB	POD	T'MENT ONE	T'MENT AHS	T'MENT ABR	T'MENT 680	T'MENT 930	T'MENT MB	T'MENT V	T'MENT X
STANDARD BASE WITH IN-LINE WHEELS & LEVELLING FEET	x	x	x	x	x	●	●	●	●	●	●	●	●	●
75MM LOCKING CASTOR BASE	x	x	●	●	●	○	○	○	○	○	○	●	●	●
100MM HOSPITAL GRADE CASTORS	x	x	○	○	○	x	x	x	x	x	x	○	○	○
LEVELLING FEET & RETRACTABLE WHEELS	●	●	x	x	x	x	x	x	x	x	x	x	x	x

## UPHOLSTERY

RANGE	VALUE-LIFT	PRO-LIFT
EVOLVE PU OR ENCORE PVC	x	●
ULTRA PU, ULTIMATE PVC OR GENUINE ITALIAN LEATHER	x	○
SEMI-PU FABRIC	●	x

## WARRANTY

RANGE	VALUE-LIFT	PRO-LIFT
STRUCTURAL	5 years	15 years
HARDWARE	3 years	5 years
MOTOR	2 years	3 years
CONTROL BOX	2 years	x
FOOTSWITCH	2 years	1 year
GAS STRUT	2 years	x
UPHOLSTERY	To arrive in perfect condition	To arrive in perfect condition
MOTOR WARRANTY UPGRADE (5 OR 10 YEARS)	x	○

## MOTOR

LIFT FORCE	6,000N	10,000N
SPEED	12mm/sec	37mm/sec
HEIGHT ADJUSTMENT (MIN TO MAX)	295mm in 26 seconds	487mm in 13 secs
SAFE WORKING LOAD	165kg	220kg

## SECONDARY MOTOR

(ECHO MB1, ECHO MB2, PODIATRY & TREATMENT MB)

LIFT FORCE	4,000N
SPEED	11mm/sec
SAFE WORKING LOAD	220kg

FOOTSWITCH	●
ADDITIONAL FOOTSWITCH	○

## OPTIONAL EXTRAS

DISPOSABLE FACE CRADLE COVERS  
DISPOSABLE TABLE COVER  
FITTED TERRY TOWELLING COVER  
LEG BOLSTER  
ADDITIONAL FOOTSWITCH

## KEY

● STANDARD  
○ OPTIONAL  
x NOT APPLICABLE



# Physiotherapy Range

## KEY FEATURES

RANGE	VALUE-LIFT		PRO-LIFT			
TABLE	ABR	TREATMENT	ACCESS ABR	TREATMENT 680	TREATMENT 930	TREATMENT ABR
HEIGHT RANGE	525 to 845mm	530 to 825mm	513 to 1000mm	475 to 962mm	513 to 1000mm	475 to 962mm
TABLE LENGTH	1890mm	1950mm	1860 to 2060mm	1860mm	1860mm	1860mm
TABLE WIDTH	720mm	680mm	680 or 730mm	610, 660 or 710mm	610, 660 or 710mm	610, 660 or 710mm
MANUAL BACKREST	x	x	●	●	●	●
LIFT-ASSIST BACKREST	●	●	x	x	x	x
MOTORISED BACKREST	x	x	○	x	x	x
ADJUSTABLE HEAD CRADLE & ARMREST	x	x	●	x	x	x
ADJUSTABLE HEAD SECTION	x	x	x	●	●	x
LIFT-ASSIST ADJUSTABLE HEAD SECTION	x	●	x	x	x	x
FACE HOLE	●	●	x	●	●	○
SUPINE CUSHION	●	●	○	x	x	x
REMOVABLE PRONE ARMREST	x	x	○	x	x	x
RAISING LEG SECTION	x	x	○	x	x	x
EXTENDABLE FOOTREST	x	x	○	x	x	x
BODY FILLER PADS	x	x	○	x	x	x

## TOP SHAPE

CONTOURED TOP	x	x	●	x	x	x
STRAIGHT-SIDED TOP	●	●	○	●	●	●

## UPHOLSTERY

RANGE	VALUE-LIFT	PRO-LIFT
EVOLVE PU OR ENCORE PVC	x	●
ULTRA PU, ULTIMATE PVC OR GENUINE ITALIAN LEATHER	x	○
SEMI-PU FABRIC	●	x

## CUSHIONING

DUNLOP STANDARD	x	●
DUNLOP ENDURO, LUXURA, FIRM OR ULTRA FIRM	x	○
IMPORTED CUSHIONING	●	x

## MOTOR

LIFT FORCE	6,000N	10,000N
SPEED	12mm/sec	37mm/sec
HEIGHT ADJUSTMENT (MIN TO MAX)	295mm in 26 seconds	487mm in 13 secs
SAFE WORKING LOAD	165kg	220kg

## SECONDARY MOTOR (ACCESS ABR)

LIFT FORCE	4,000N
SPEED	11mm/sec
SAFE WORKING LOAD	220kg
FOOTSWITCH	●
ADDITIONAL FOOTSWITCH	○

## BASE STYLE

RANGE	VALUE-LIFT	PRO-LIFT
STANDARD BASE WITH IN-LINE WHEELS & LEVELLING FEET	x	●
75MM LOCKING CASTOR BASE	x	○
LEVELLING FEET & RETRACTABLE WHEELS	●	x

## WARRANTY

STRUCTURAL	5 years	15 years
HARDWARE	3 years	5 years
MOTOR	2 years	3 years
CONTROL BOX	2 years	x
FOOTSWITCH	2 years	1 year
GAS STRUT	2 years	x
UPHOLSTERY	To arrive in perfect condition	To arrive in perfect condition
MOTOR WARRANTY UPGRADE (5 OR 10 YEARS)	x	○

## OPTIONAL EXTRAS

DISPOSABLE FACE CRADLE COVERS  
DISPOSABLE TABLE COVER  
FITTED TERRY TOWELLING COVER  
LEG BOLSTER  
ADDITIONAL FOOTSWITCH

## KEY

● STANDARD  
○ OPTIONAL  
x NOT APPLICABLE

